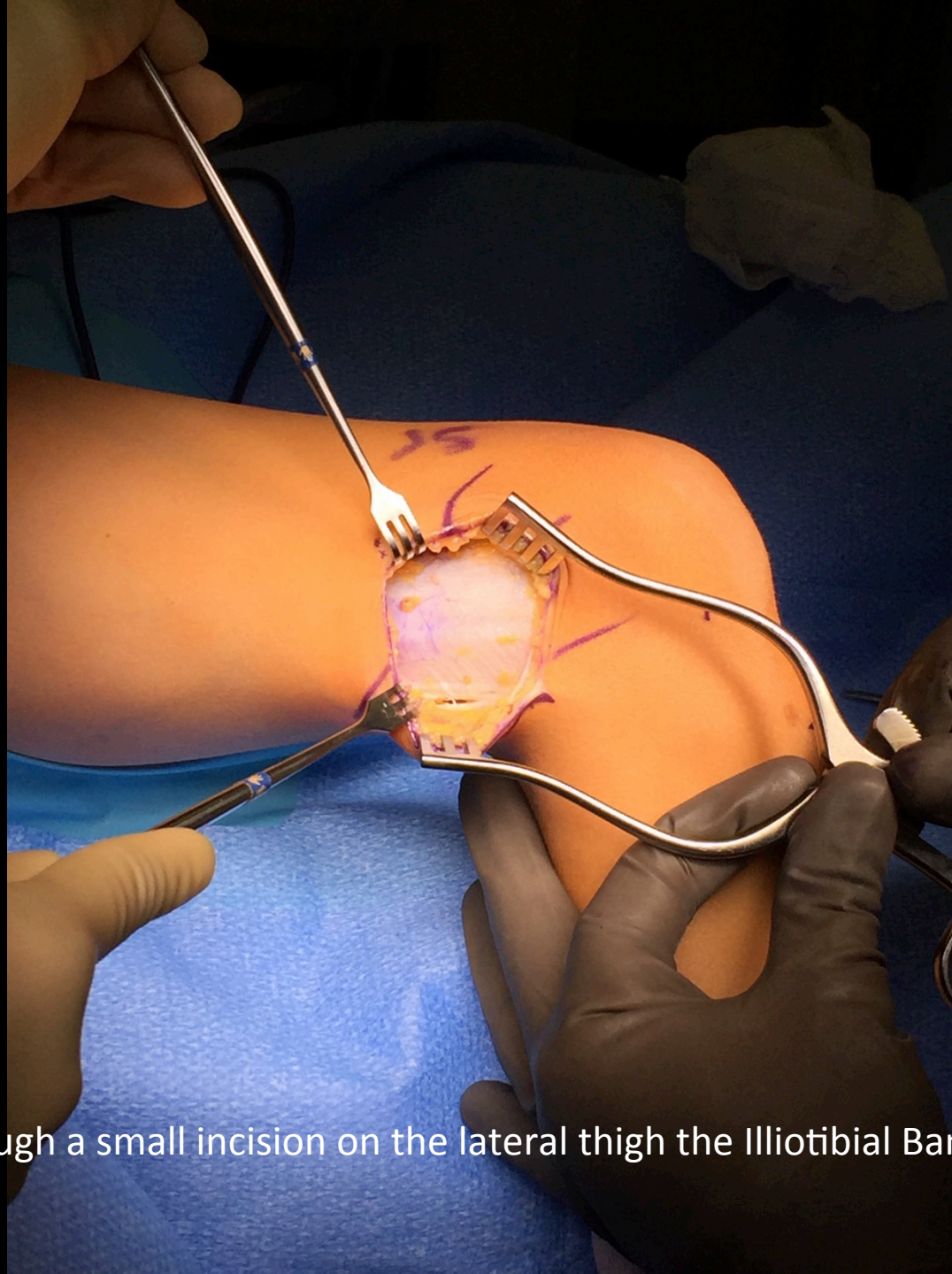
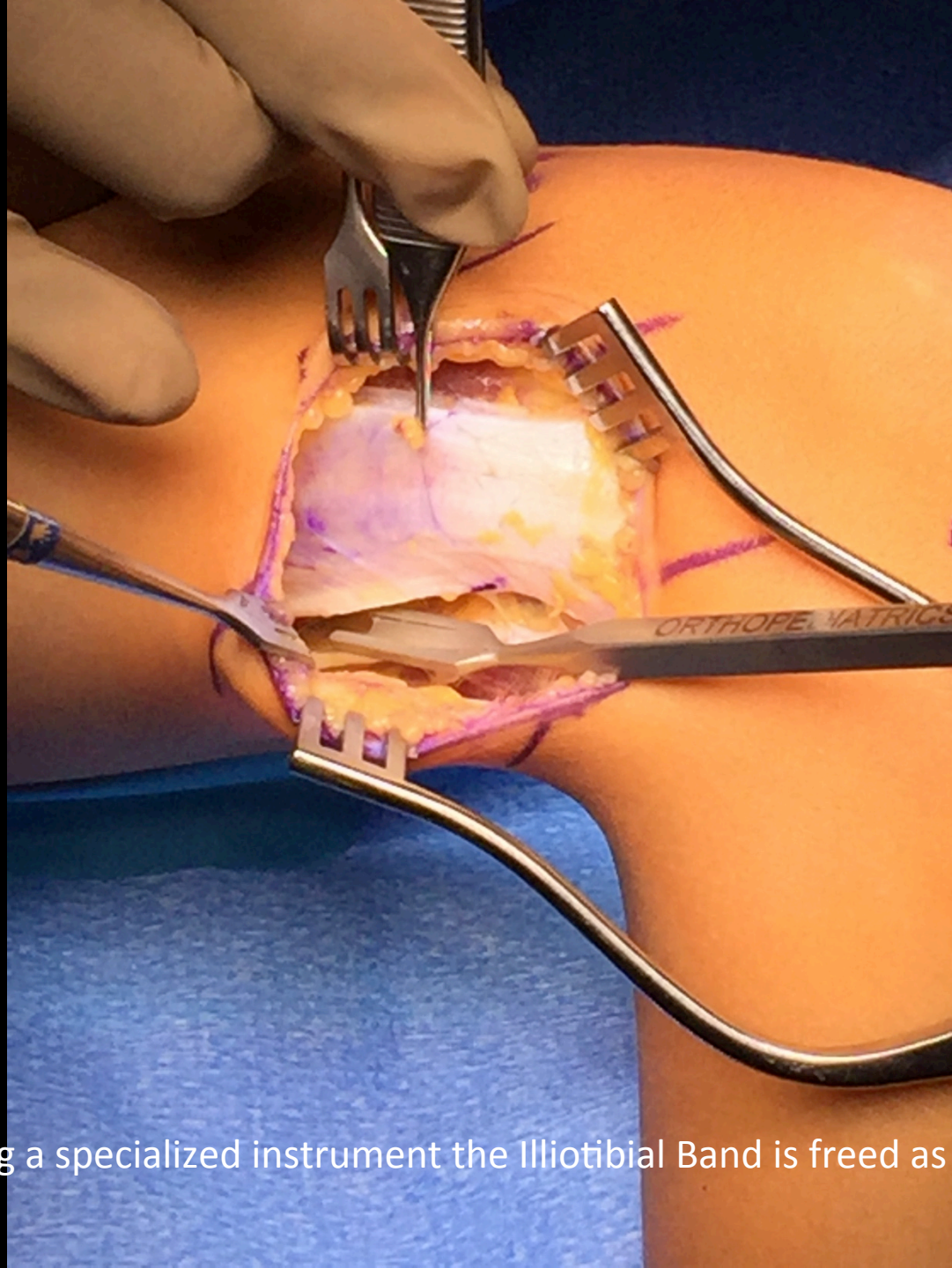


Physeal (Growth Plate) Sparing  
Anterior Cruciate Ligament  
Reconstruction with Iliotibial Band

Dr. John A. Schlechter

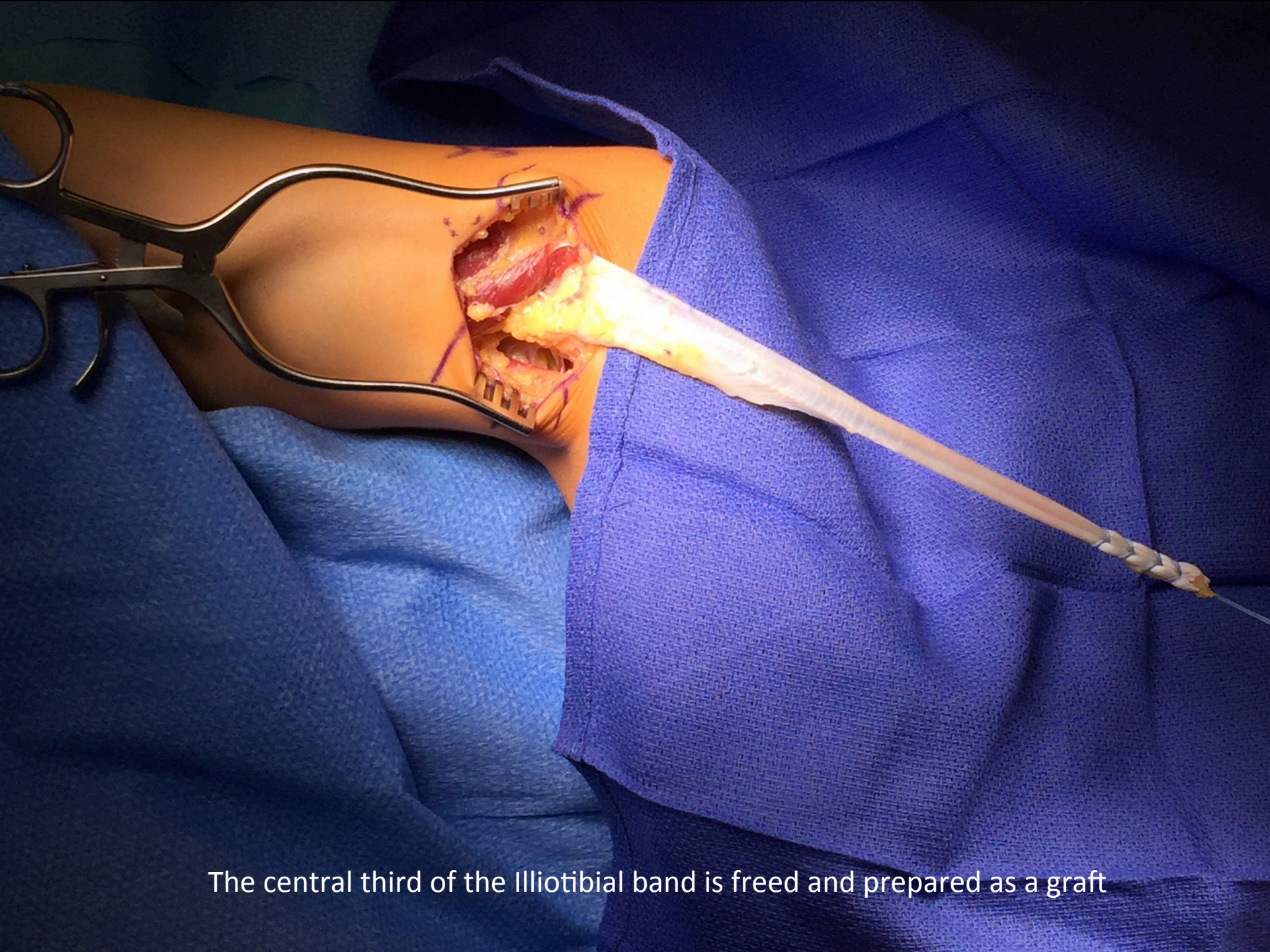


Through a small incision on the lateral thigh the Iliotibial Band is exposed



Using a specialized instrument the Iliotibial Band is freed as a graft



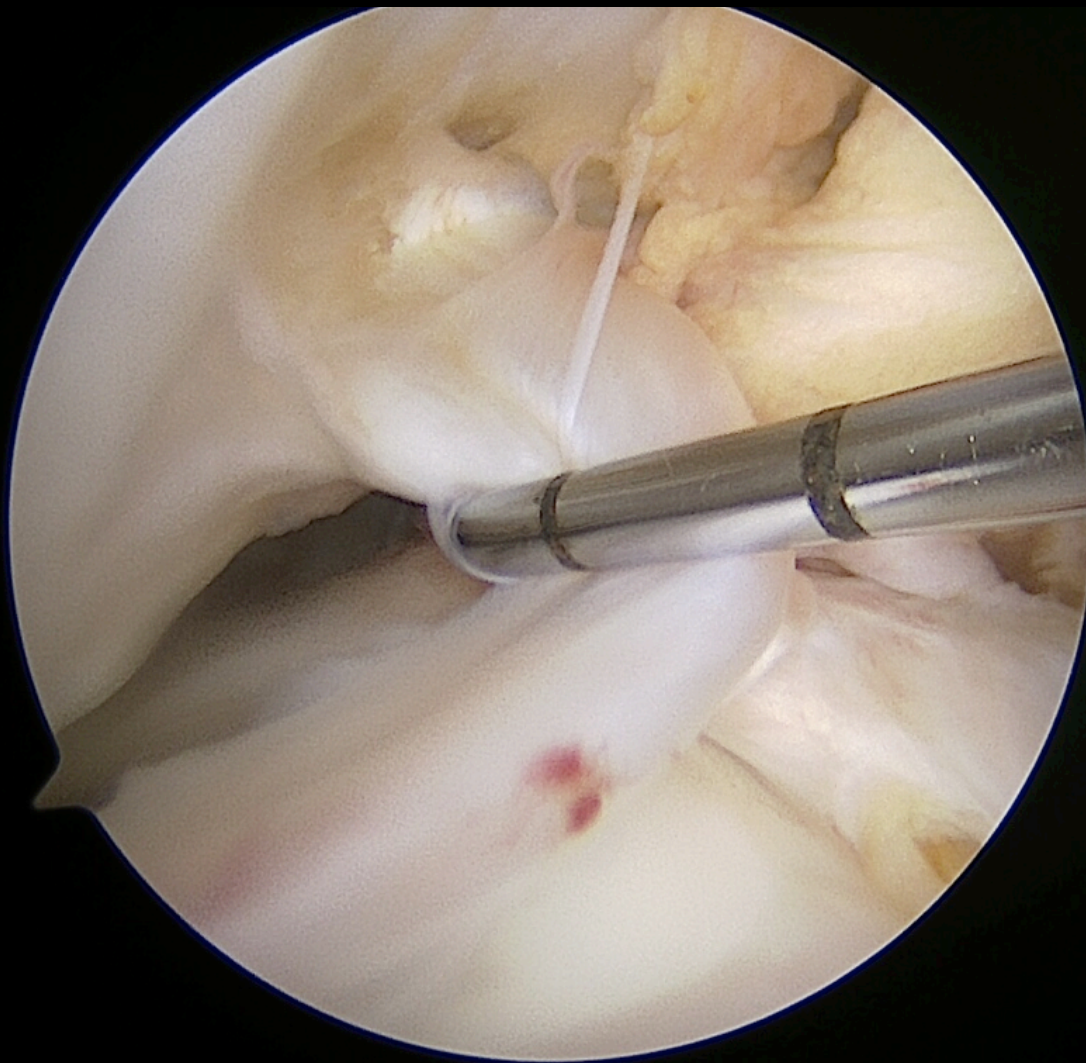


The central third of the Iliotibial band is freed and prepared as a graft



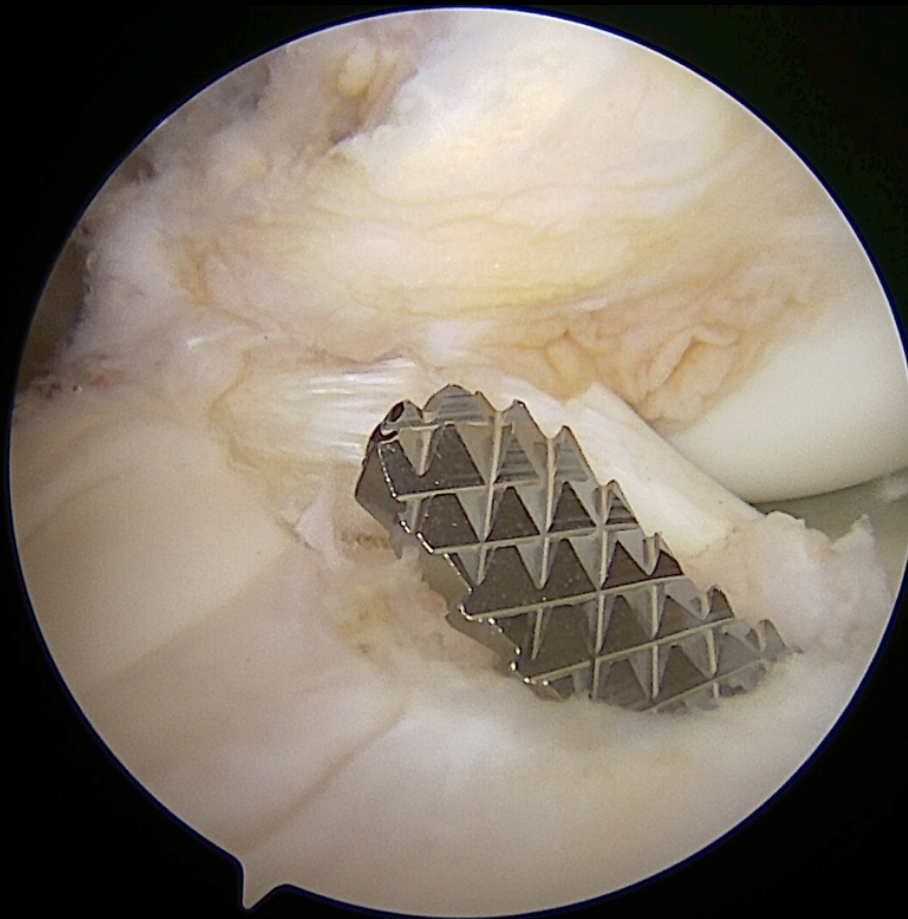


A site on the front of the tibia (shin) is prepared for later graft fixation



Arthroscopy confirming torn Anterior Cruciate Ligament





Rasp preparation for graft passage inside the joint under the inter-meniscal ligament

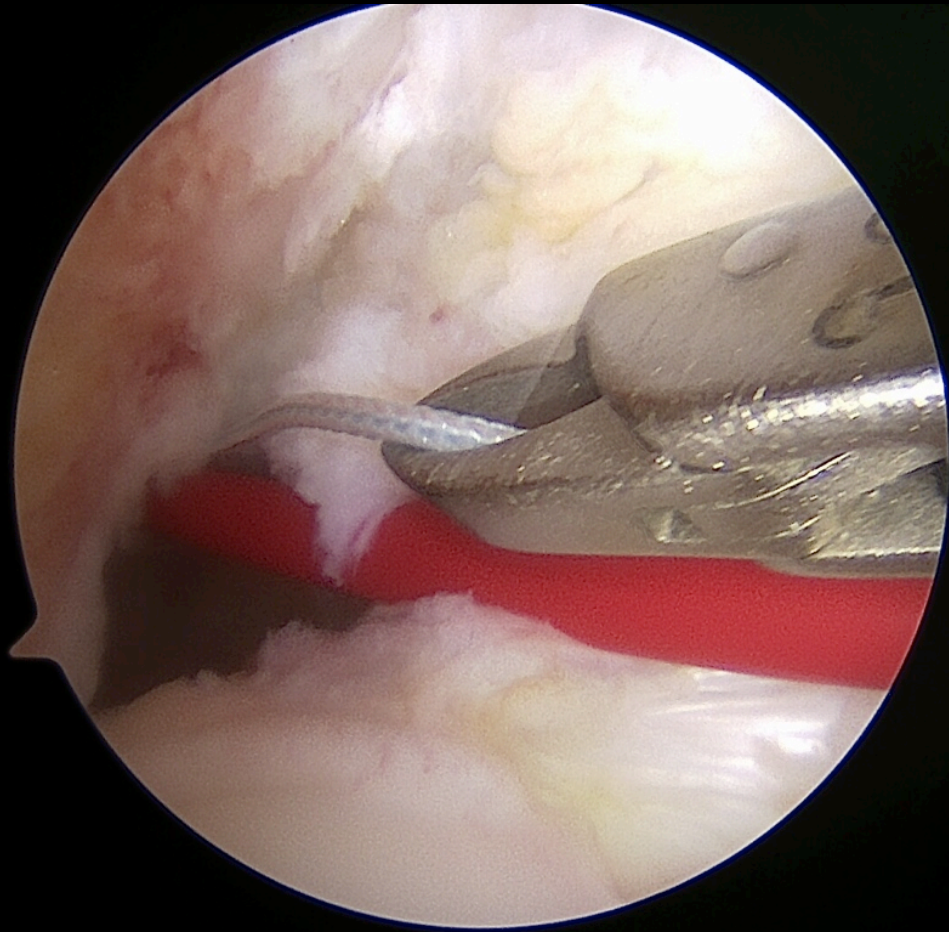


Needle localization for graft passage behind the femur avoiding the growth plate



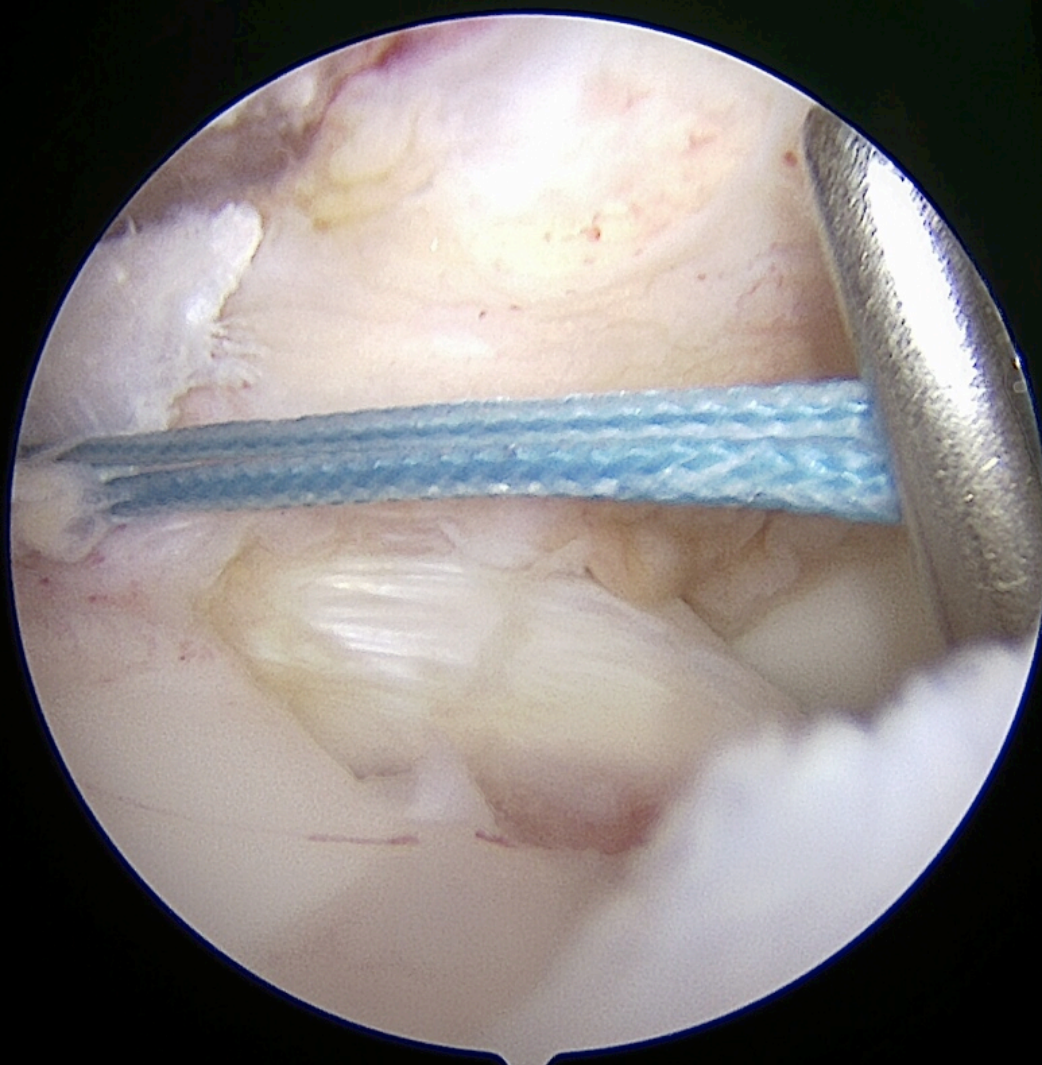


Joint entry for graft passage behind the femur avoiding the growth plate

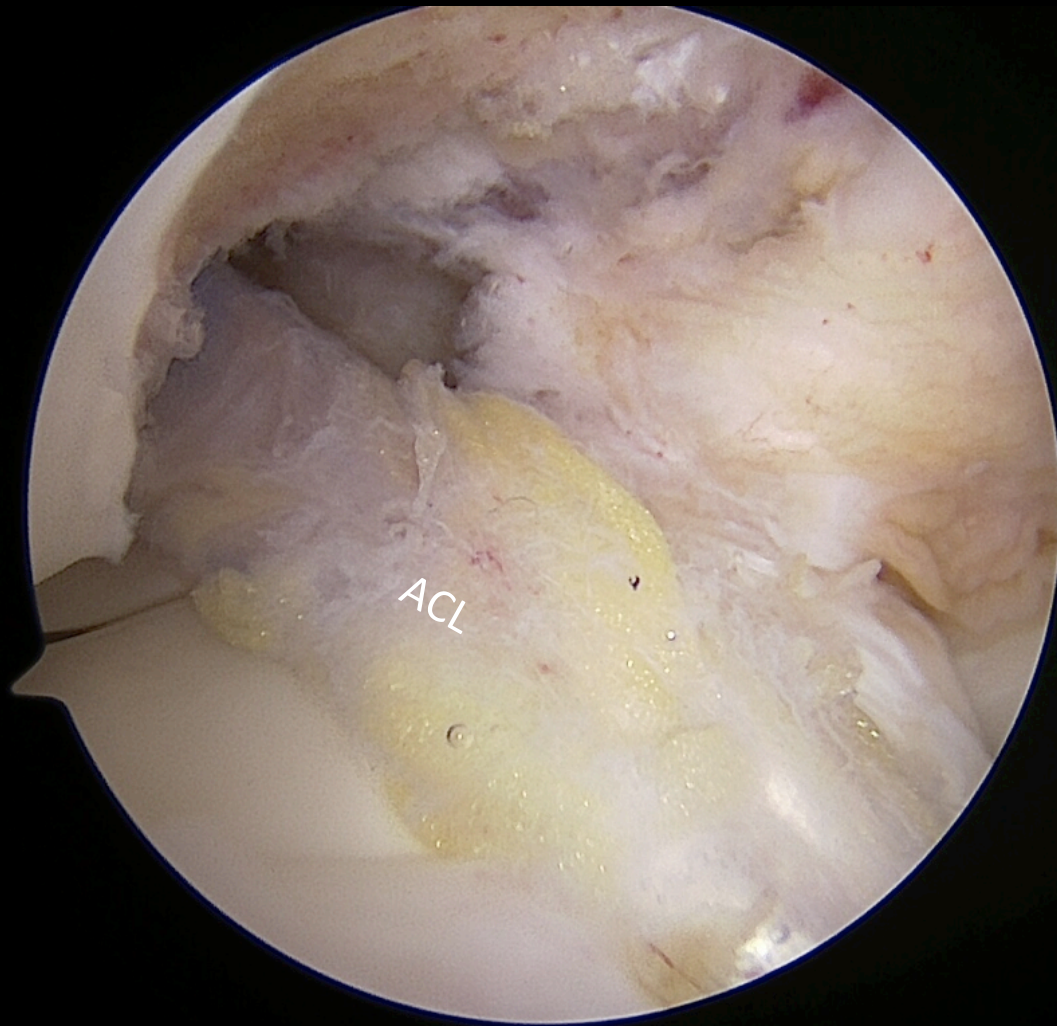


ACL Graft Passage



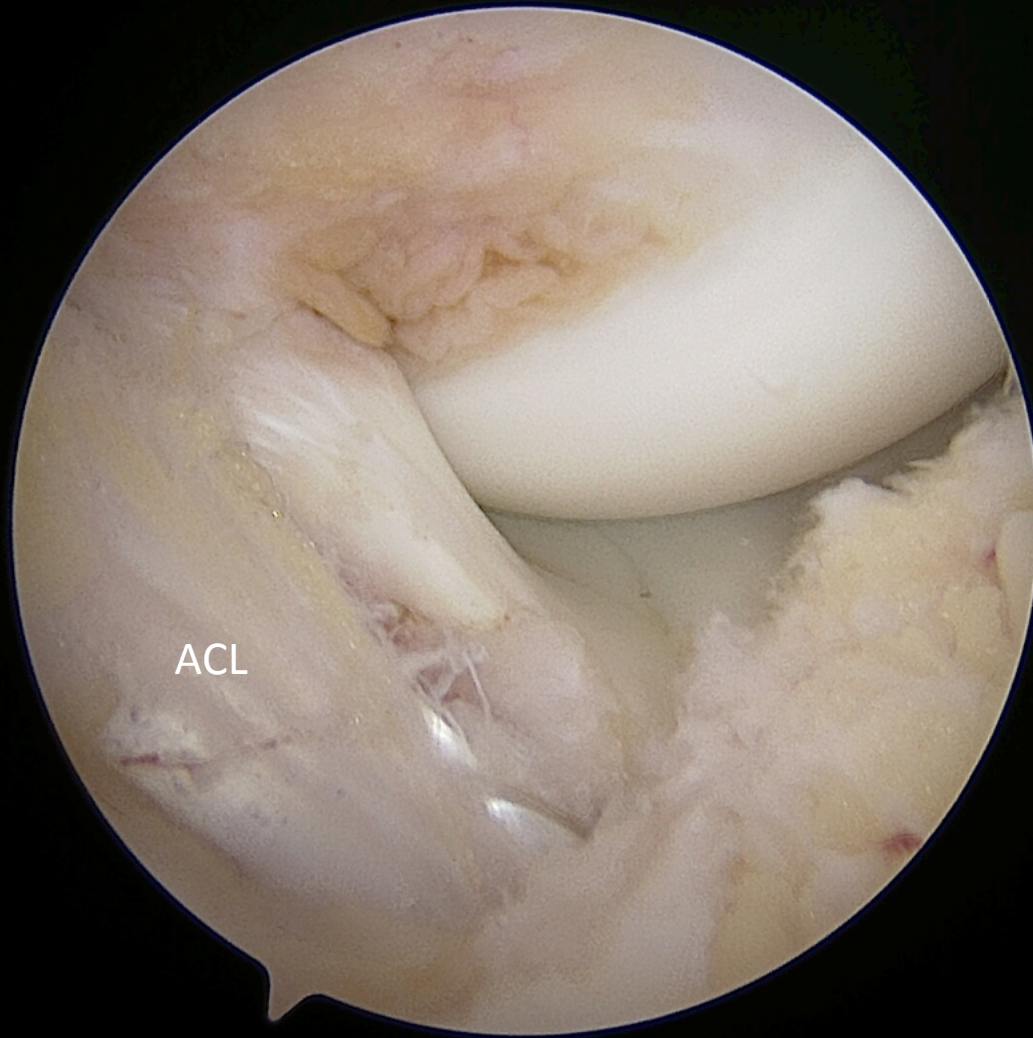


ACL Graft Passage



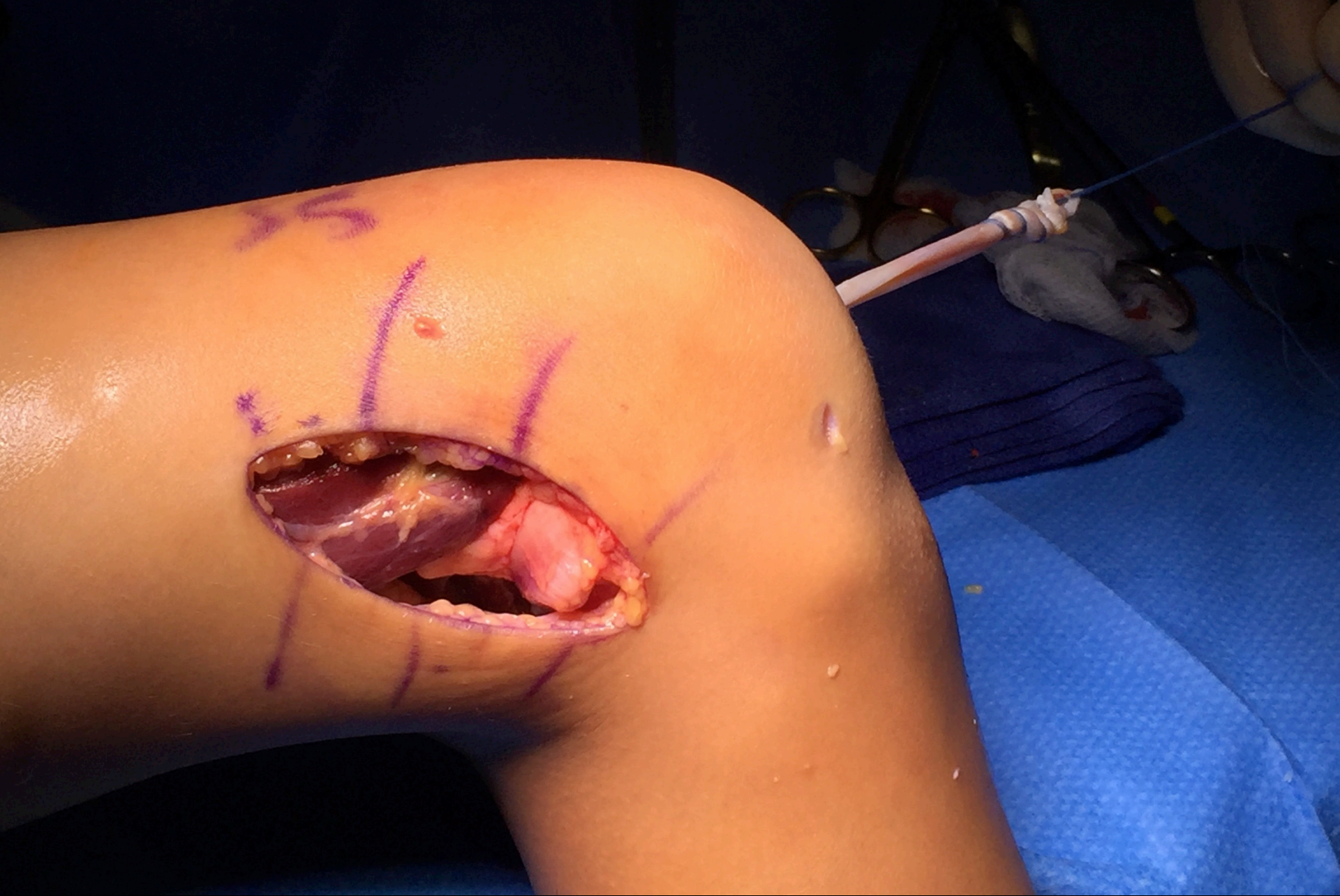
ACL graft in position





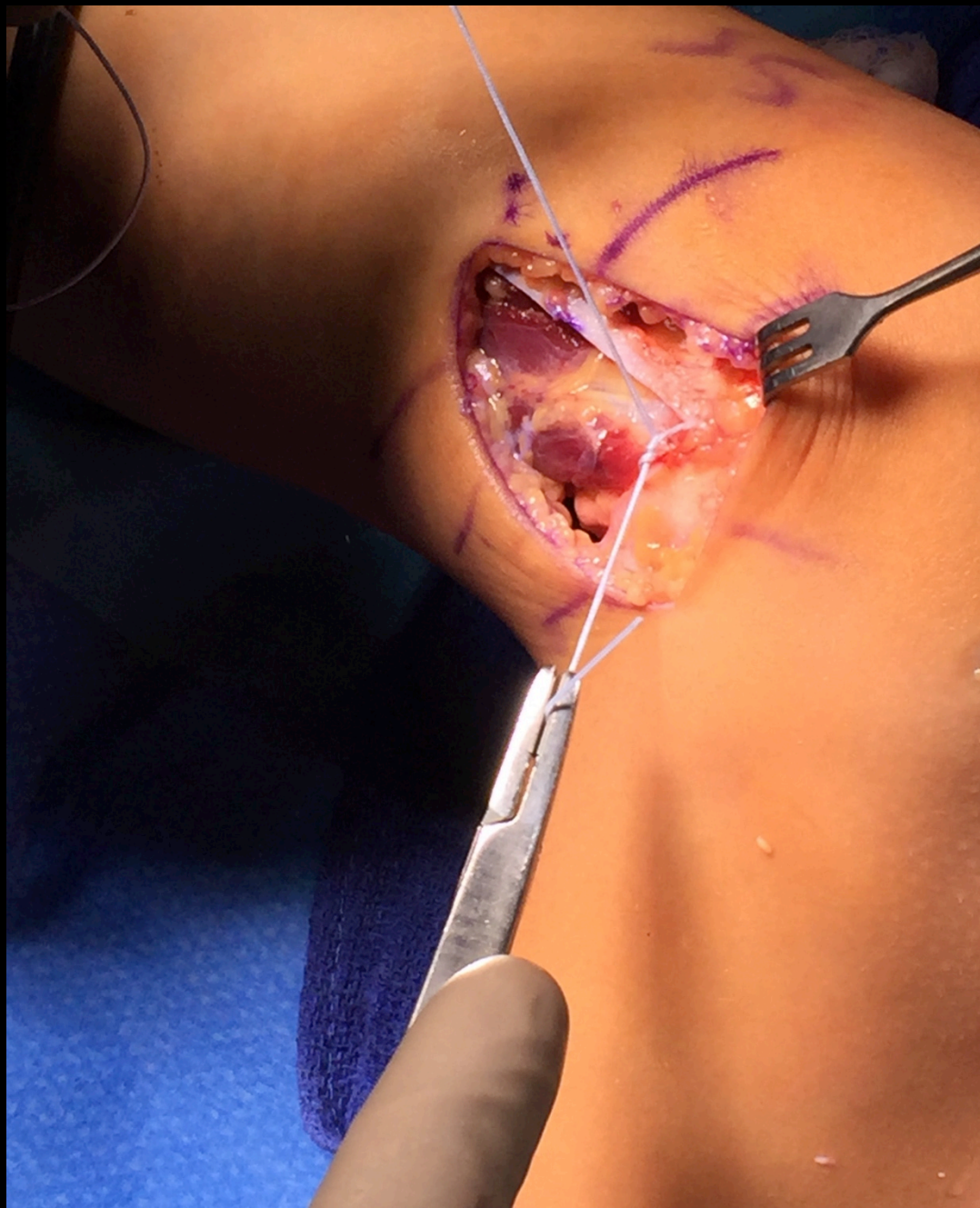
ACL

ACL graft in position

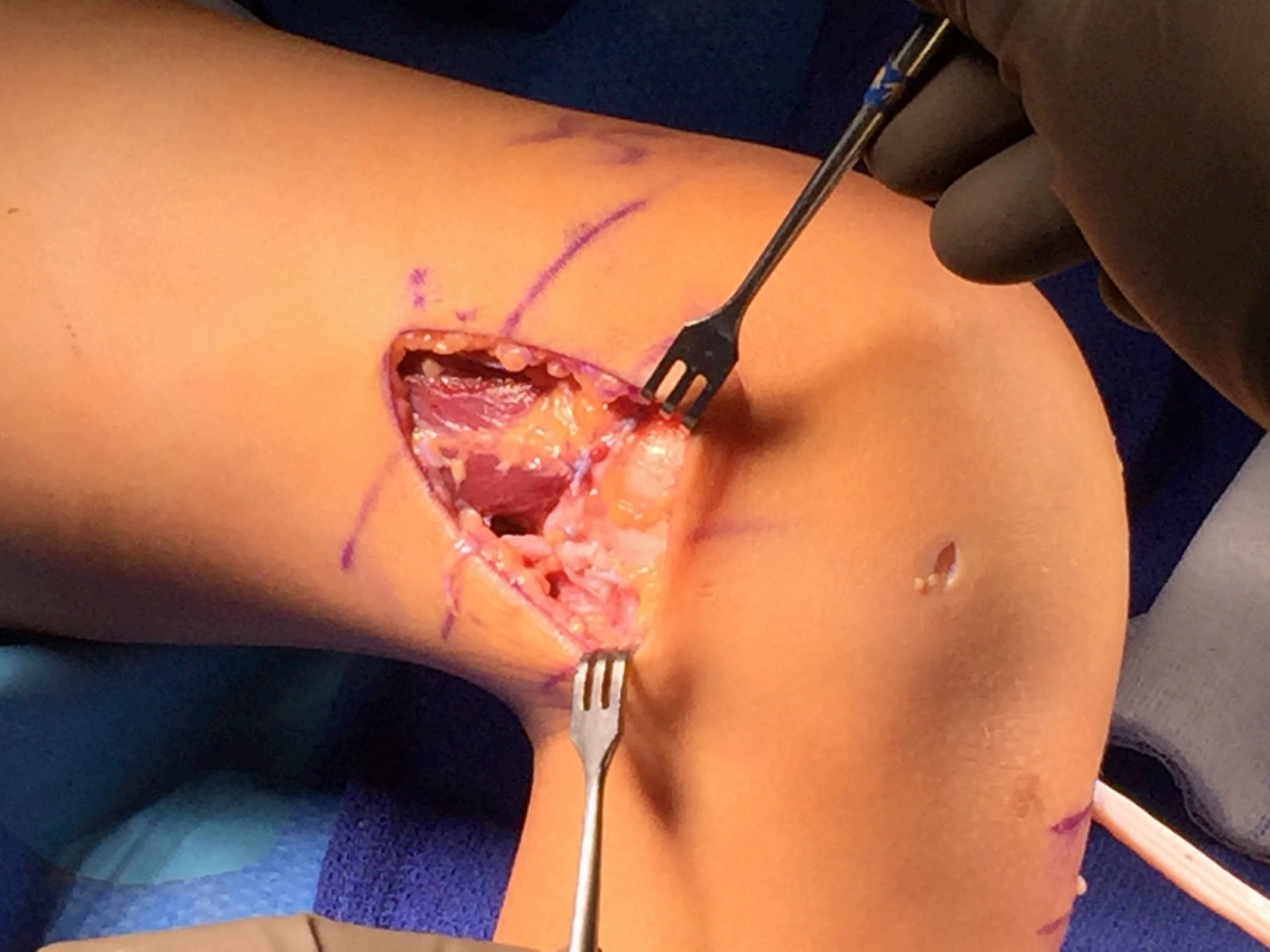


The graft is passed behind the femur avoiding the distal femoral growth plate

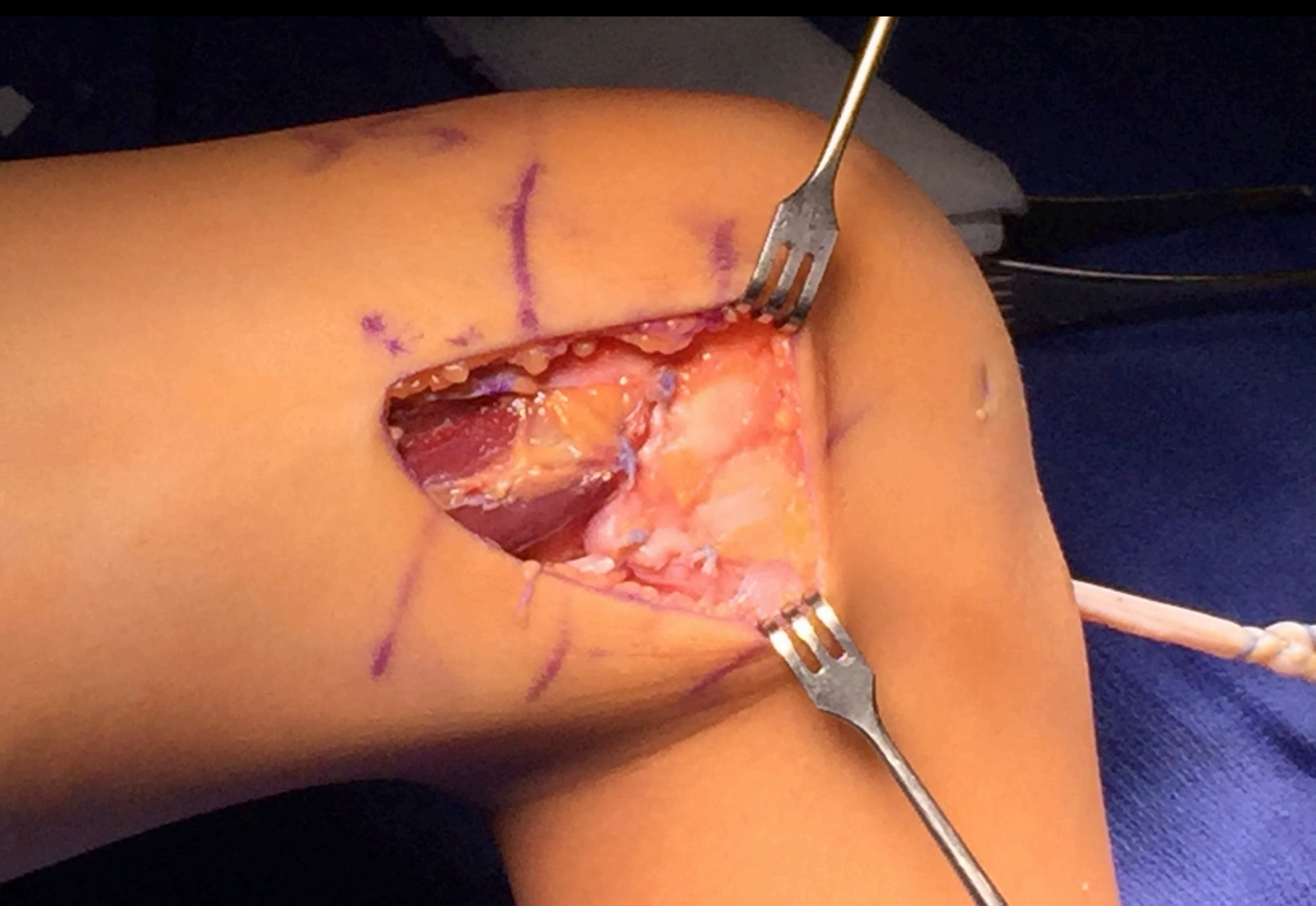




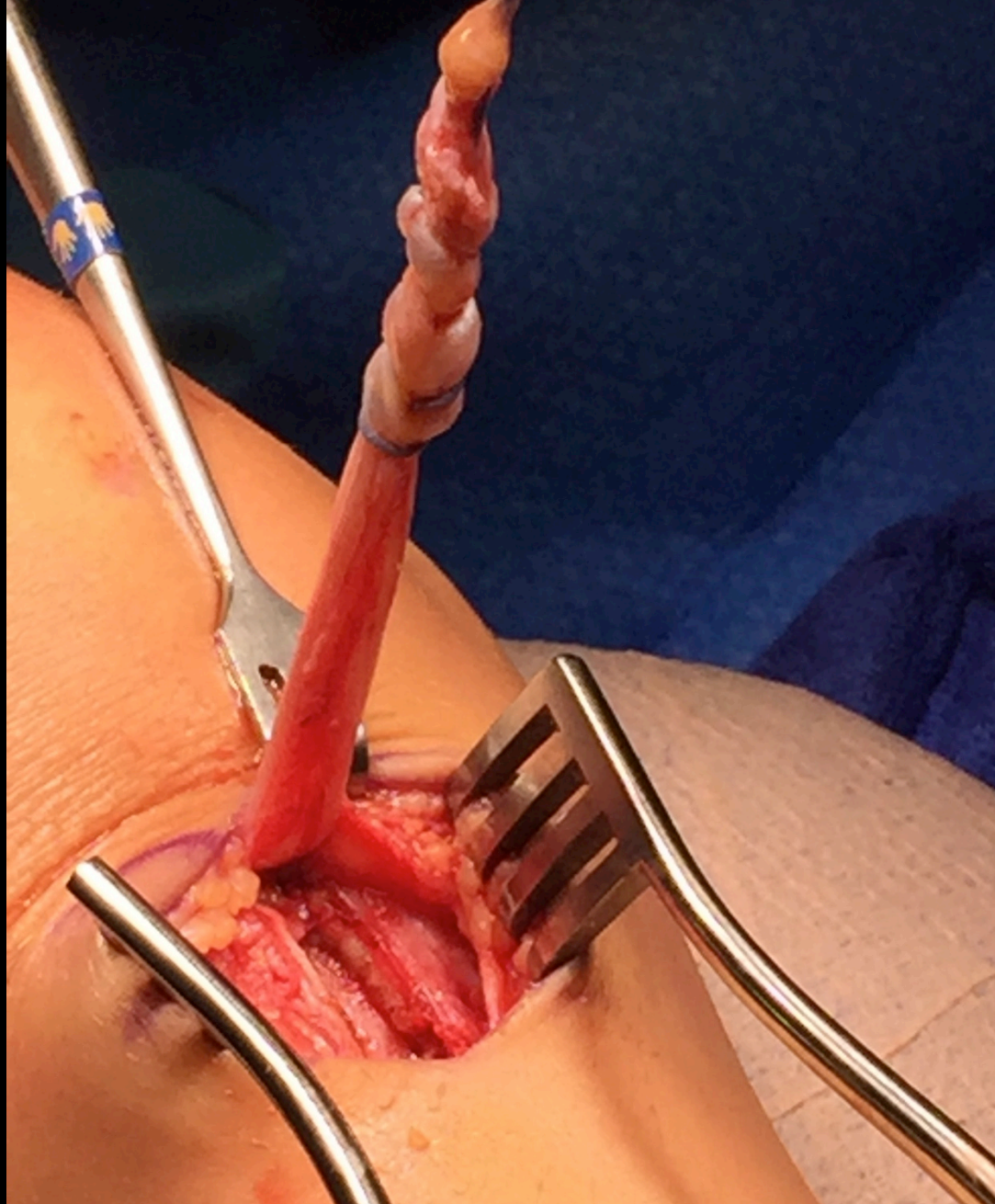
The graft is fixated to the outer femur with heavy non absorbable sutures.





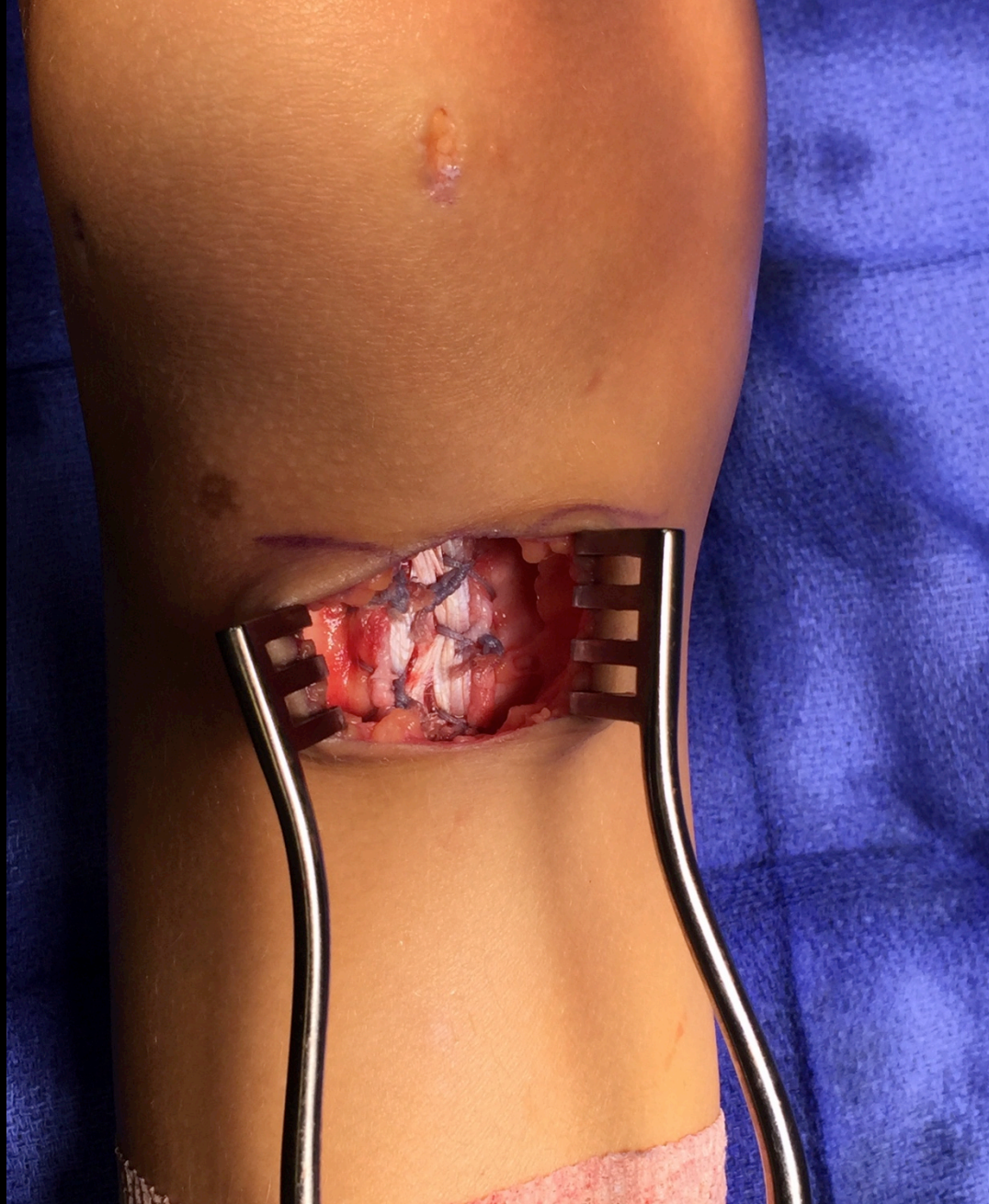


Completed graft fixation to the outer femur with heavy non absorbable sutures.



The graft is shuttled out of the knee





Fixated to the anterior tibia (shin) with heavy non-absorbable sutures



Final closure





Final closure





Dressings, Ice Machine Pad and Brace in place